

Backup and Restore Utility

Knowledge Builder Backup and Restore Utility User Guidekbbkug

This document covers using the Knowledge Builder Backup and Restore utility that allows the copying and exporting of Knowledge Builder booksets.

Release Information

Document Name	Document ID	Release Number	Publication Date
Knowledge Builder Backup and Restore Utility User Guide - kbbkug	N/A	R210	8/04

What Do You Want To Do?

Launching the utility

What Do You Want To Do?

If You Want To . . .	Then . . .
Launch the Backup and Restore Utility.	Click Here
Backup installed Knowledge Builder booksets (content repositories).	Click Here
Restore backup bookset to an installed Knowledge Builder.	Click Here
Export Dynamic Help from a book within a bookset.	Click Here
Import and migrate exported Dynamic Help to a Dynamic Help bookset.	Click Here

Getting started

The Knowledge Builder Backup and Restore utility lets you capture existing installed Knowledge Builders booksets and copy them to an alternate location, so can create an archive of installed booksets. You can then restore an archived bookset to an active Knowledge Builder in the future. This means you can re-deploy installed booksets without using the original Knowledge Builder CD-ROM.

This utility also lets you export and import Dynamic Help. This means you can easily import and migrate a previously exported Dynamic Help content to the latest installed Knowledge Builder Tools bookset.

Knowledge Builder Backup and Restore Utility

The following activities are accomplished with the Backup and Restore utility:

- Creating Knowledge Builder bookset backup
- Restoring Knowledge Builder bookset
- Export Dynamic Help
- Import Dynamic Help

Launching the utility

The Knowledge Builder Backup and Restore Utility is launched through the Start menu.

Prerequisites

- You have installed Knowledge Builder version 4.2 or later on a computer running Windows.
- You are logged onto the Knowledge Builder Client computer with Administrator privileges.

Considerations

- You are familiar with interacting with dialog boxes on a computer running Windows.
- You have documented your backup strategy that defines your who, what, where, and when decisions.

Launch the Knowledge Builder Backup and Restore Utility by using the following procedure:

- 1** Click the **Start -> Programs -> Honeywell -> Knowledge Builder Tools -> KB Backup Restore Utility**.
- 2** On the **Warning** message, click the **OK** button to acknowledge the message.
- 3** **KB BackupRestore Utility** dialog opens.



- 4** This completes the procedure. Go to the next applicable function section in this document.
-

Creating Knowledge Builder bookset backup

The Knowledge Builder Backup and Restore Utility only backs up the booksets (content repositories) of an installed Knowledge Builder. This includes content files, such as html, gif, and pdf; and structure files, such as xml and xsl.

Prerequisites

You have launched the Knowledge Builder Backup and Restore utility.

Considerations

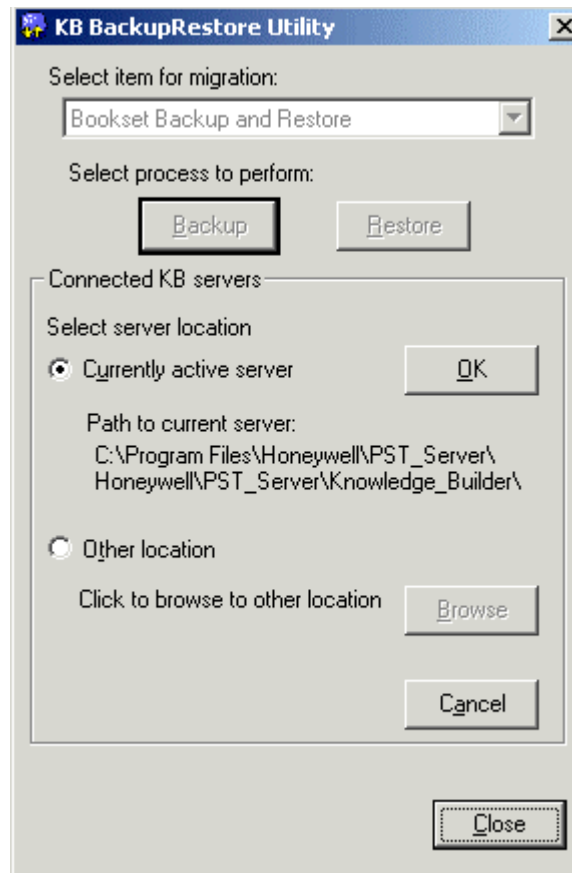
Knowledge Builder Backup and Restore Utility

Creating Knowledge Builder bookset backup

- Since booksets for the same release and name should be similar, they should be backed up to a central location only once and not from every system.
- If booksets include post-shipment Dynamic Help, you may need to export and import Dynamic Help to a bookset.
- You are familiar with interacting with dialog boxes on a computer running Windows.

Backup a Knowledge Builder bookset by using the following procedure:

- 1 On the **KB BackupRestore Utility** dialog, confirm that **Bookset Backup and Restore** selection appears in the **Select item for migration** box. If not, click the **arrow** button and select it from the list.
- 2 Click the **Backup** button.



- 3 Under **Connected KB servers**:
-

- Click **Currently active server** to select the server listed under **Path to current server**. Click the **OK** button. Or,
 - Click **Other location** to activate the **Browse** button. Click the **Browse** button and navigate to valid Knowledge Builder server location. Click the **OK** button on the **User Preferred Server** dialog.
- 4 Under **Available Booksets**, wait for 100% Complete to appear in the **Search status** box.
- 5 In **Select an item for backup** list, click check box for listed bookset to clear the check box if bookset is not to be included in the backup or select (check) the check box if the bookset is to be included in the backup.
- 6 Click the **Continue** button.
- 7 Under **Backup Destination**:
- Click **Default backup destination** to select default directory location listed. Click the **OK** button. Or,
 - Click **Select a user preferred backup destination** to activate the **Browse** button. Click the **Browse** button and navigate to desired backup directory location. Click the **OK** button on the **User Preferred Export Destination** dialog.
- 8 Under **Backup directory**, confirm path listed under **Selected Destination Path** is correct. If desired, edit the directory name shown in the text box.
- 9 Click the **Continue** button.
- 10 On **Backup from KB?** dialog, click the **Yes** button to confirm the action and initiate the backup.
- 11 Wait for **Copying** dialog to close. This may take several minutes depending on the size of the booksets.
- 12 On **KBBackupRestore** dialog, click the **OK** button to acknowledge that backup is complete.
- 13 Click the **Close** Button to close the utility. Click the **Yes** button to acknowledge the action.
- 14 This completes the procedure. Go to the next applicable function section in this document.
-

Restoring Knowledge Builder bookset

The Knowledge Builder Backup and Restore Utility allows booksets to be restored to either the default Knowledge Builder location or a user preferred location.

Prerequisites

Knowledge Builder Backup and Restore Utility

Restoring Knowledge Builder bookset

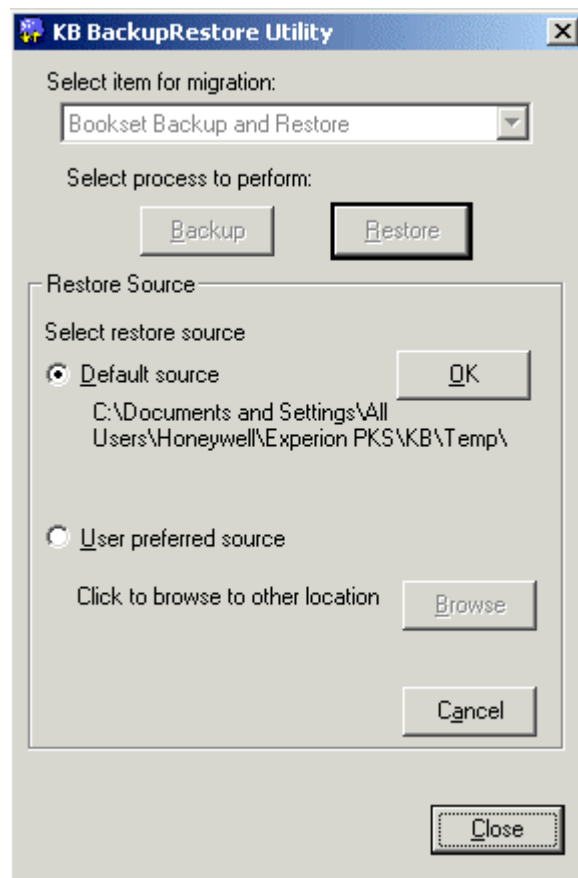
- You have launched the Knowledge Builder Backup and Restore utility.
- You have a backup of a Knowledge Builder bookset.

Considerations

- You are familiar with interacting with dialog boxes on a computer running Windows.

Restore a Knowledge Builder bookset by using the following procedure:

- 1 On the **KB BackupRestore Utility** dialog, confirm that **Bookset Backup and Restore** selection appears in the **Select item for migration** box. If not, click the **arrow** button and select it from the list.
- 2 Click the **Restore** button.



- 3 Under **Restore Source**:

- Click **Default Source** to select the source path listed to backup bookset. Click the **OK** button. Or,
 - Click **User preferred source** to activate the **Browse** button. Click the **Browse** button and navigate to valid Knowledge Builder backup source location. Click the **OK** button on the **User Preferred Restore Source** dialog.
- 4 In **Available booksets** list under **Collected booksets**, click check box for listed bookset to clear the check box if bookset is not to be included in the restore or select (check) the check box if the bookset is to be included in the restore.
 - 5 Click the **Continue** button.
 - 6 If Duplicate Bookset dialog appears, click **Yes** to replace the existing bookset or **No** to quit the operation.
 - 7 Wait for **Copying** dialog to close. This may take several minutes depending on the size of the booksets.
 - 8 On **Restore complete** dialog, click the **OK** button to acknowledge that Knowledge Builder must be restarted before restored bookset will be visible.
 - 9 Click the **Close** Button to close the utility. Click the **Yes** button to acknowledge the action.
 - 10 This completes the procedure. Go to the next applicable function section in this document.
-

Exporting Dynamic Help



ATTENTION

The migration of Dynamic Help is an optional function that is only required if you have added fieldbus devices to the Control Builder library in an Experion PKS system running R100 or R101 software. Use this utility to export Dynamic Help with post-shipment content before upgrading to Knowledge Builder version 4.2 or later.

If Dynamic Help exists in a Knowledge Builder 4.2 or later, it exists as its own bookset and does not get exported/imported. The Dynamic Help bookset should be backed up and restored as a bookset, instead of being exported and imported.

Prerequisites

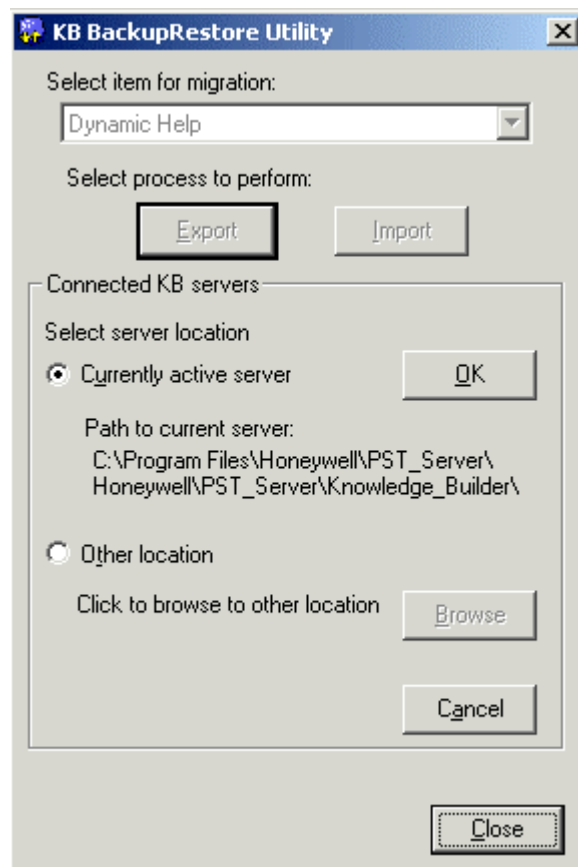
- You have launched the Knowledge Builder Backup and Restore utility.
- You have Dynamic Help with post-shipment content.

Considerations

- To migrate Dynamic Help with post-shipment content from a Knowledge Builder version earlier than 4.2, be sure you export the existing Dynamic Help before you upgrade to Knowledge Builder version 4.2.
- You are familiar with interacting with dialog boxes on a computer running Windows.

Export Dynamic Help by using the following procedure:

- 1 On the **KB BackupRestore Utility** dialog, click the **arrow** button in the **Select item for migration** box and select **Dynamic Help** from the list.
- 2 Click the **Export** button.



- 3 Under **Connected KB servers**:
 - Click **Currently active server** to select the server listed under **Path to**

- current server.** Click the **OK** button. Or,
- Click **Other location** to activate the **Browse** button. Click the **Browse** button and navigate to valid Knowledge Builder server location. Click the **OK** button on the **User Preferred Server** dialog.
- Under **Collected KB Servers**, wait for 100% Complete to appear in the **Search status** box.
 - In **Select an item for export** list, click the Dynamic Help Book to be exported.
 - Click the **Continue** button.
 - Under **Export Destination**:
 - Click **Default export destination** to select default directory location listed. Click the **OK** button. Or,
 - Click **Select a user preferred export destination** to activate the **Browse** button. Click the **Browse** button and navigate to desired backup directory location. Click the **OK** button on the **User Preferred Export Destination** dialog.
 - On **Export from KB?** dialog, click the **Yes** button to confirm the action and initiate the backup.
 - Wait for **KBBackupRestore** dialog to appear, click the **OK** button to acknowledge completion of the export function.
 - Click the **Close** Button to close the utility. Click the **Yes** button to acknowledge the action.
 - This completes the procedure. Go to the next applicable function section in this document.
-

Importing Dynamic Help



ATTENTION

The migration of Dynamic Help is an optional function that is only required if you have added fieldbus devices to the Control Builder library in an Experion PKS system running R100 or R101 software. Use this utility to export/import Dynamic Help with post-shipment content before upgrading to Knowledge Builder version 4.2 or later.

If Dynamic Help exists in a Knowledge Builder 4.2 or later, it exists as its own bookset and does not get exported/imported. The Dynamic Help bookset should be backed up and restored as a bookset instead of being exported and imported.

Knowledge Builder Backup and Restore Utility

Importing Dynamic Help

Prerequisites

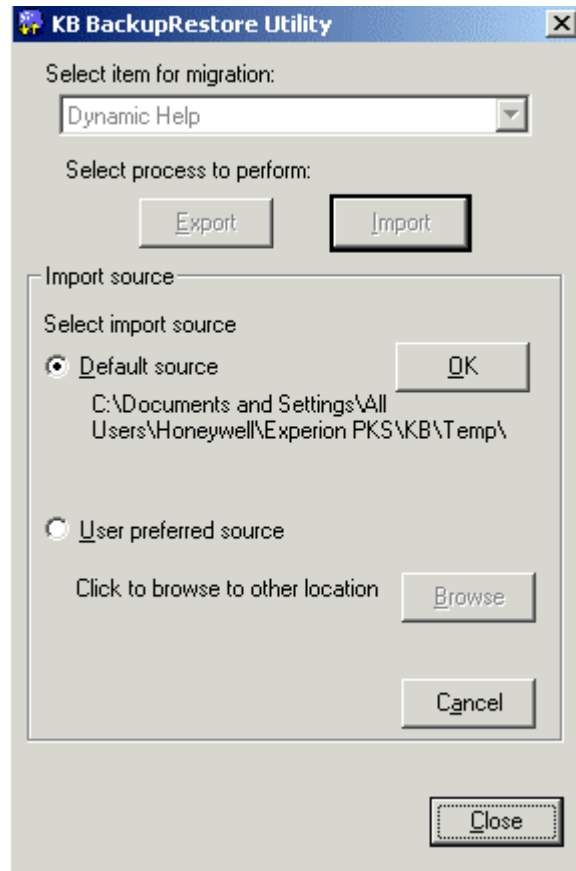
- You have exported Dynamic Help with post-shipment content.
- You have installed Knowledge Builder version 4.2 or later with Dynamic Help bookset.
- You have launched the Knowledge Builder Backup and Restore utility.

Considerations

- You are familiar with interacting with dialog boxes on a computer running Windows.
- The default folder name syntax for exported Dynamic Help is:
KBContentExport_Date_Time Stamp

Import Dynamic Help by using the following procedure:

- 1** On the **KB BackupRestore Utility** dialog, click the **arrow** button in the **Select item for migration** box and select **Dynamic Help** from the list.
- 2** Click the **Import** button.



- 3 Under **Import Source**:
 - Click **Default Source** to select the source path listed to exported Dynamic Help. Click the **OK** button. Or,
 - Click **User preferred source** to activate the **Browse** button. Click the **Browse** button and navigate to valid Knowledge Builder Dynamic Help content source location. Click the **OK** button on the **User Preferred Import Source** dialog.
- 4 In **Folders from source location** list under **Collected import folders**, click exported Dynamic Help file to be imported. .
- 5 Click the **Continue** button.
- 6 On **Refresh KB** dialog, click the **OK** button to acknowledge that Knowledge Builder must be restarted before Imported Dynamic Help will be visible.
- 7 Click the **Close** Button to close the utility. Click the **Yes** button to

Knowledge Builder Backup and Restore Utility

Importing Dynamic Help

acknowledge the action.

- 8** This completes the procedure. Go to the next applicable function section in this document.
-

Filename: kbbkug.doc
Directory: C:\Transit Files\Docs Temp Repository
Template: C:\Program Files\Microsoft Office
97\Templates\Honeywell_new\HW7x9K.dot
Title: Knowledge Builder Backup Restore Utility
Subject: User Guide
Author: Mark Trush
Keywords:
Comments:
Creation Date: 08/28/03 1:11 PM
Change Number: 19
Last Saved On: 07/21/04 1:29 PM
Last Saved By: pa62d-xpwks117
Total Editing Time: 53 Minutes
Last Printed On: 08/09/04 2:58 PM
As of Last Complete Printing
Number of Pages: 14
Number of Words: 6,711 (approx.)
Number of Characters: 38,253 (approx.)